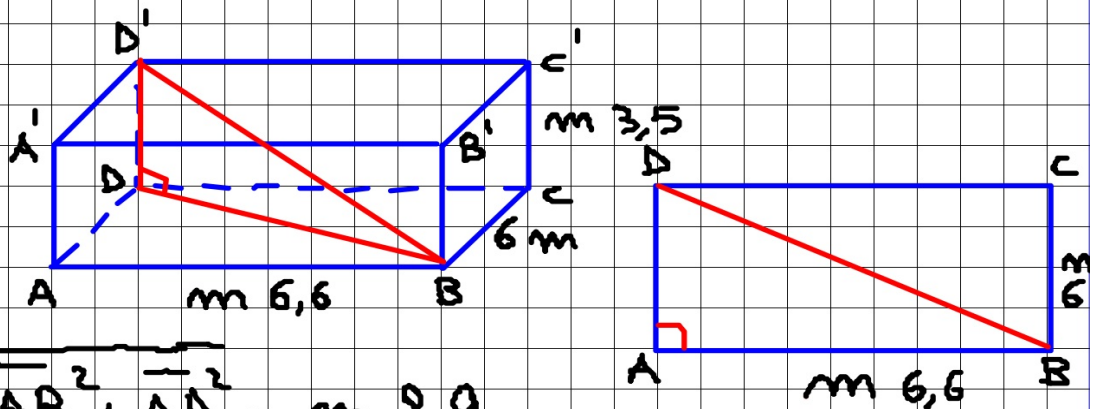


**Determinare la misura della diagonale di un parallelepipedo rettangolo.**

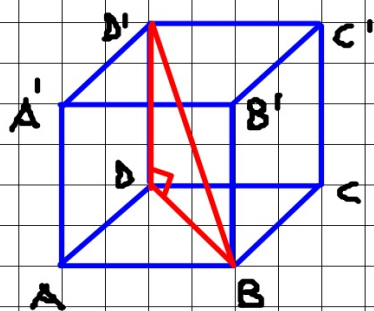
$$\overline{BD'} = ?$$



$$\left\{ \begin{array}{l} \overline{BD} = \sqrt{\overline{AB}^2 + \overline{AD}^2} = m\ 8,9 \\ \overline{BD'} = \sqrt{\overline{BD}^2 + \overline{DD'}^2} = m\ 9,6 \end{array} \right.$$

$$\overline{BD'} = \sqrt{(\overline{AB}^2 + \overline{AD}^2) + \overline{DD'}^2} = \sqrt{\overline{AB}^2 + \overline{AD}^2 + \overline{DD'}^2}$$

**Determinare la formula della diagonale del cubo .**



$$\overline{AB} = l$$

$$\begin{aligned}\overline{BD'} &= \sqrt{l^2 + l^2 + l^2} = \sqrt{3 \cdot l^2} = \sqrt{3} \cdot \sqrt{l^2} = \\ &= l \cdot \sqrt{3}\end{aligned}$$