

$$A(3;2)$$

$$B(-5;-4)$$

$$C(-7;2)$$

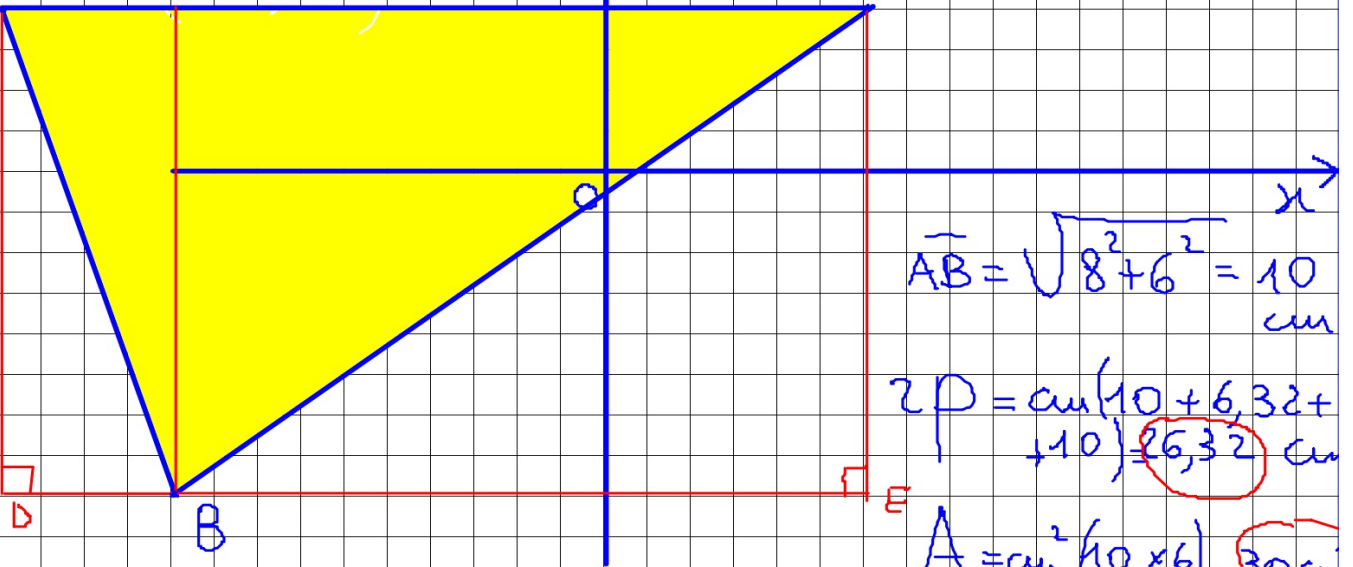
y

$$\mu = 1 \text{ cm}$$

$$\overline{AC} = 10 \text{ cm}$$

$$\overline{CB} = \sqrt{6^2 + 2^2} = 6,32 \text{ cm}$$

A



$$\overline{AB} = \sqrt{8^2 + 6^2} = 10 \text{ cm}$$

$$2p = \text{cm} (10 + 6,32 + 10) = 26,32 \text{ cm}$$

$$A = \text{cm}^2 \left(\frac{10 \times 6}{2} \right) = 30 \text{ cm}^2$$

