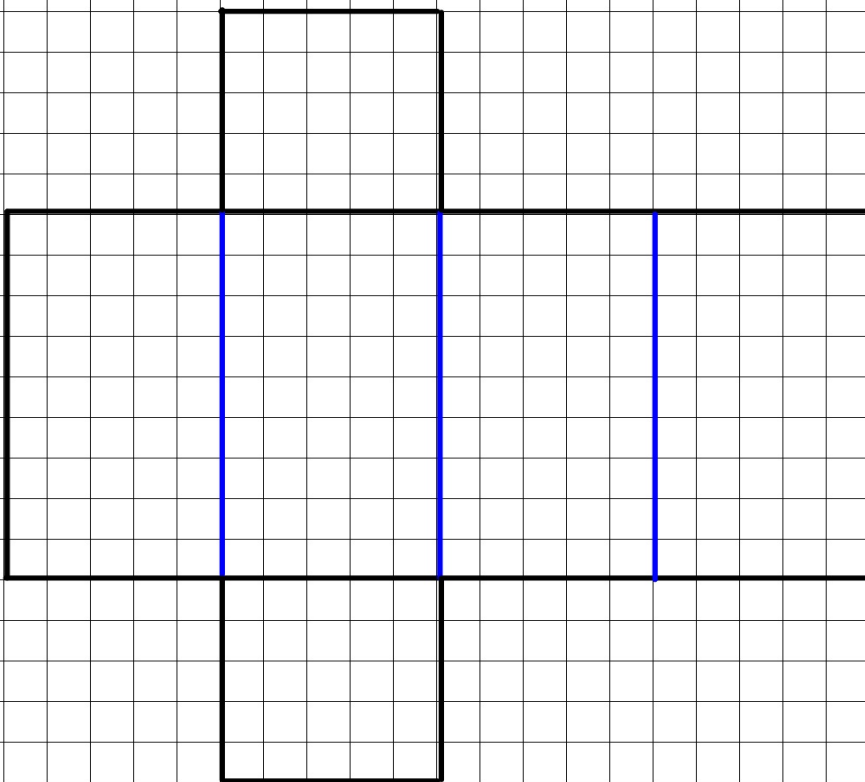
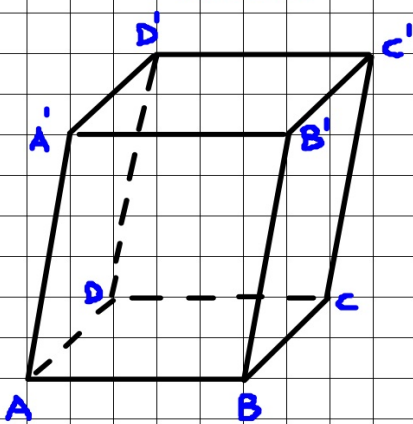


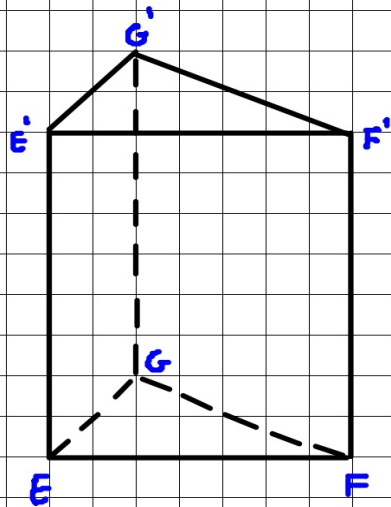
*Sviluppo del Prisma quadrangolare regolare*



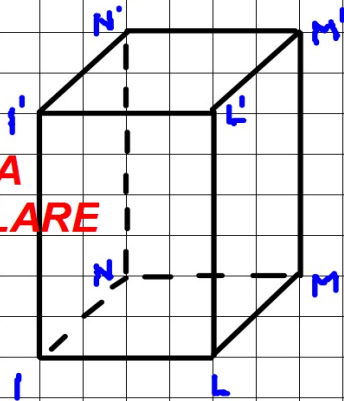
**PRISMA**



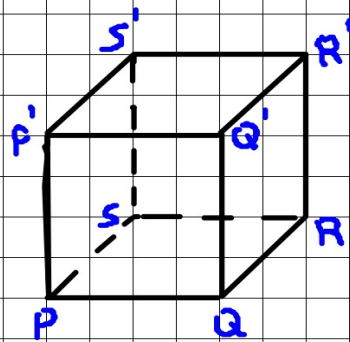
**PRISMA  
RETTO**

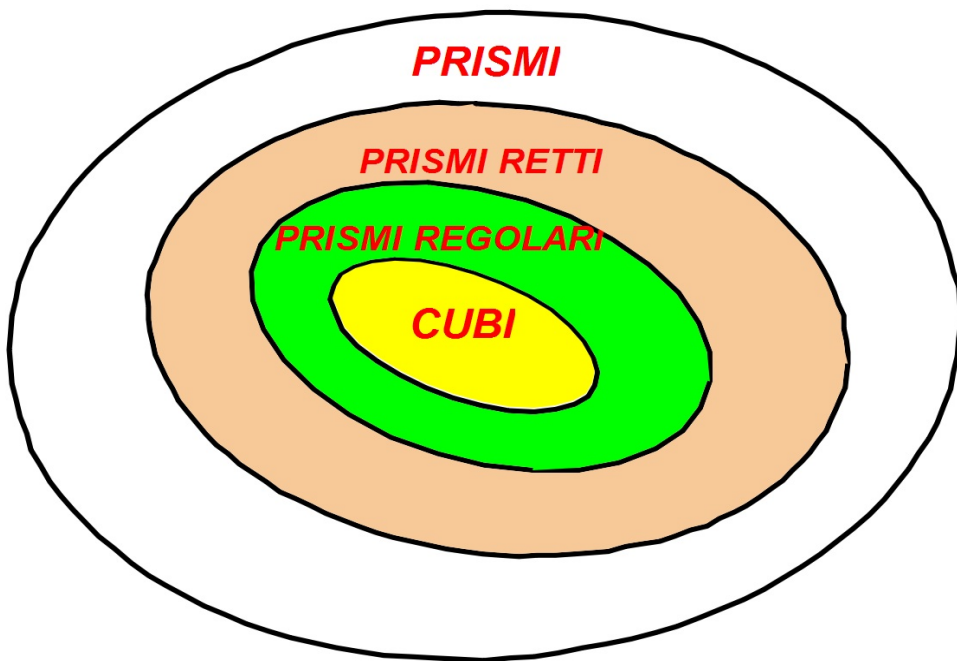


**PRISMA  
REGOLARE**



**ESAEDRO  
REGOLARE**

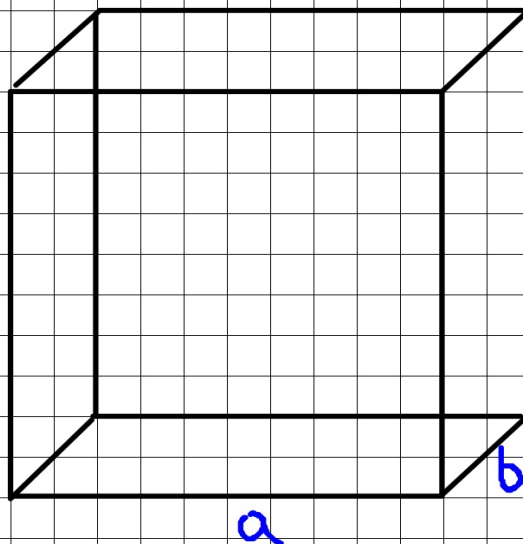




## VOLUME DEL PRISMA

**Volume:** spazio occupato da un corpo  
(si misura in  $m^3$ )

$$V = a \cdot b \cdot c$$
$$V = Ab \cdot h$$

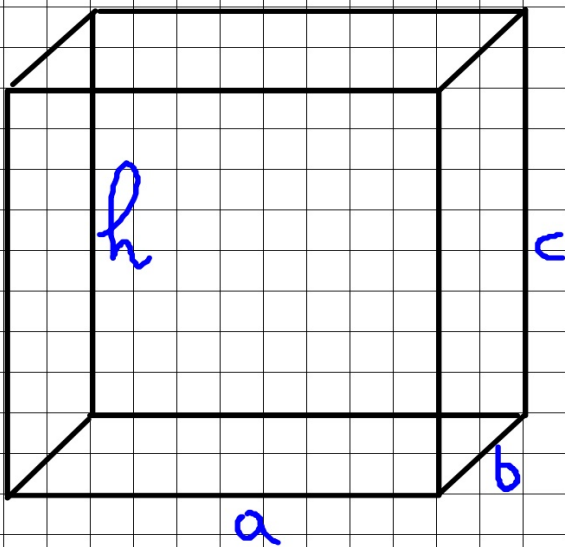


$$Ab = \frac{V}{h}$$
$$h = \frac{V}{Ab}$$

**Volume = area di base per altezza**

## AREA DELLA SUPERFICIE TOTALE DEL PRISMA

**SUPERFICIE:** è la parte di un corpo esposta all'esterno; che si può colorare, tappezzare, verniciare, toccare...



$$AST = 2 \cdot Ab + ASEl$$

$$ASEl = P_b \cdot h$$

$$P_b = \frac{ASEl}{h}$$

$$h = \frac{ASEl}{P_b}$$